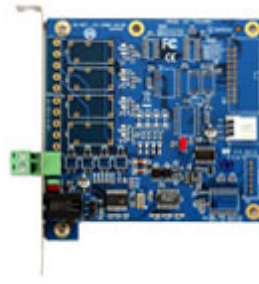


## GV-NET Card V3.1



The GV-NET Card V3.1 is a RS-485 / RS-232 interface converter that can be installed inside a PC. It also supports connection via USB port.

Specifications		
OS Supported	32-bit	Windows XP / Windows Vista / Windows 7 / Windows Server 2008
	64-bit	Windows 7 / Windows Server 2008
Interface		RJ-11 to DB9 (RS-232)
		RJ-11 to USB
		3-pin internal USB to internal USB
		RS-485+ / RS-485-
Communication		RS-485 1,200~115,200 bps; USB
Environmental Conditions		0~50°C / 32~122°F, 5%~95% (non-condensing)
Dimensions (W x H)		97 x 90 ( mm ) / 3.82 x 3.54 (in)
Installation Guide		<a href="#">GV-NET Card V3.1</a>

**Note:** All specifications are subject to change without notice.